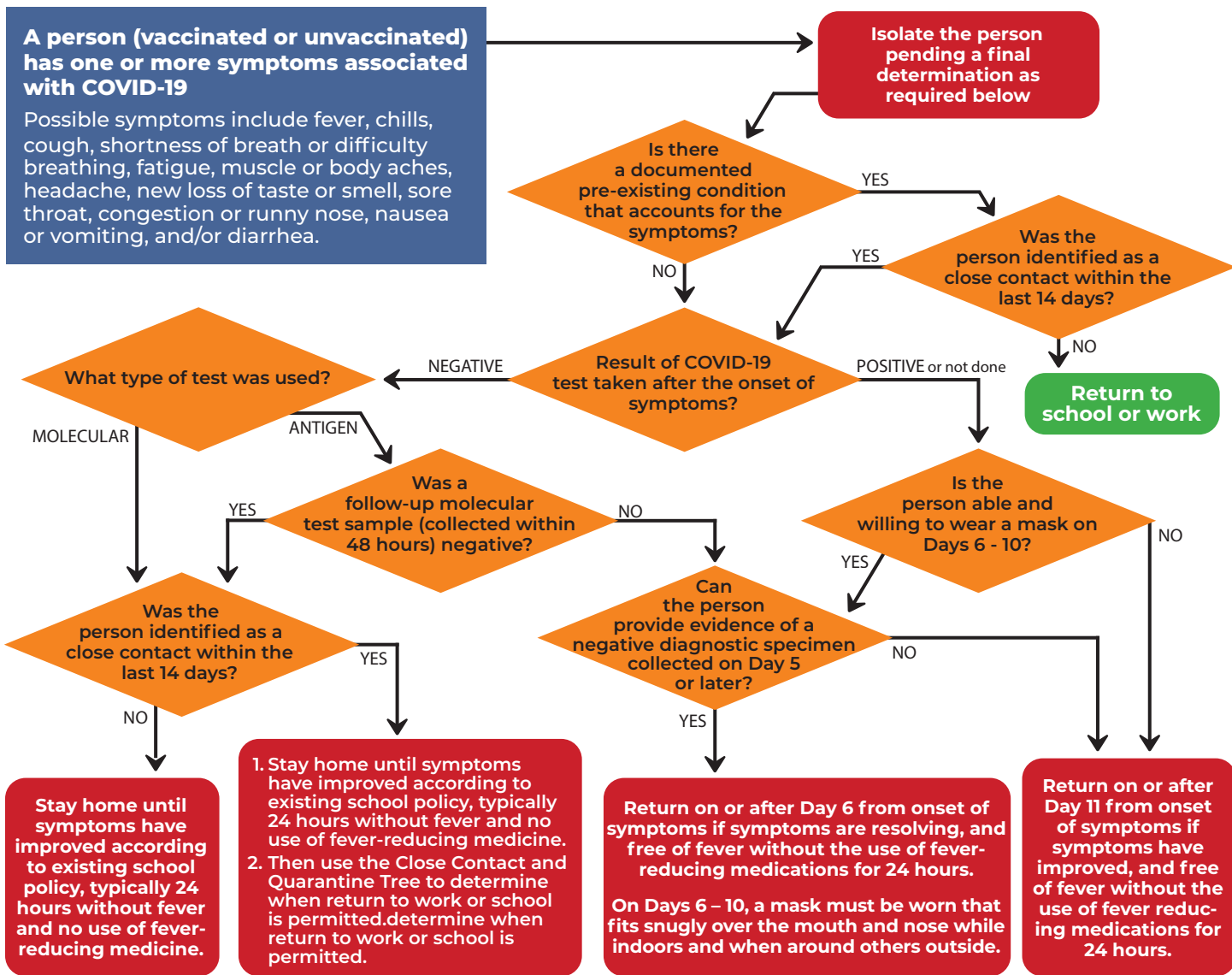


# COVID-19 Decision Trees for K-12 Schools

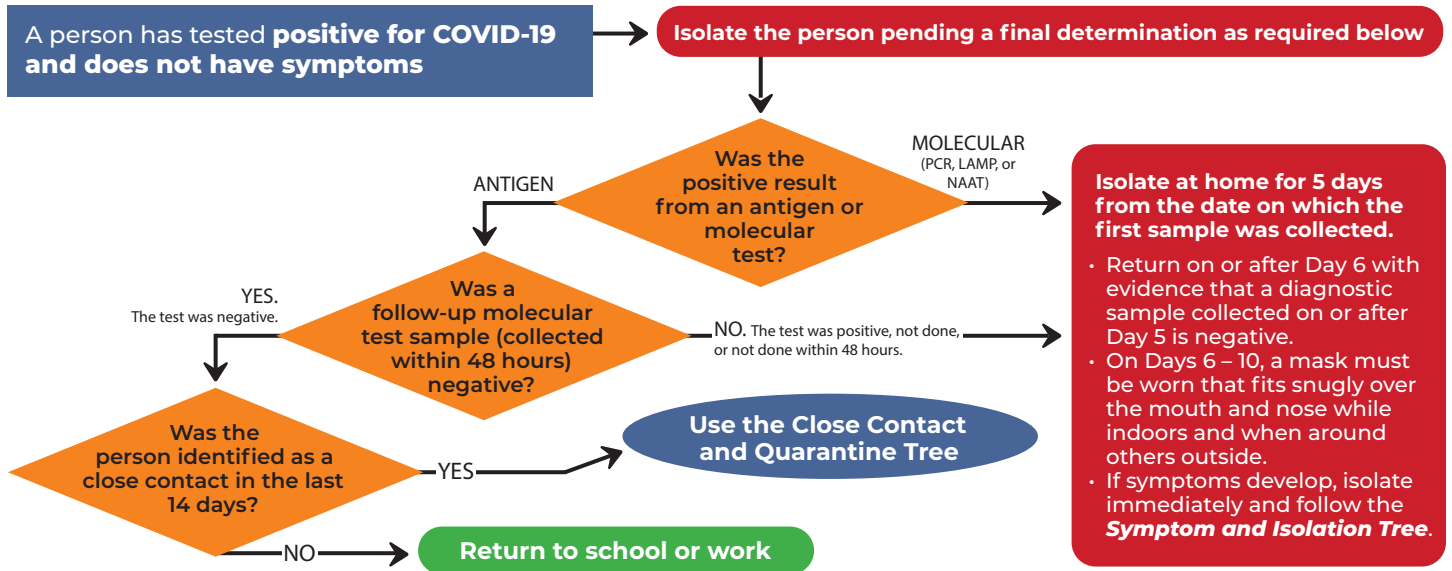
## If the person...

- Has **symptoms**, use the **Symptom and Isolation Tree**
- Has **tested positive** and **does not have symptoms**, use the **Asymptomatic Positive Tree**
- Is identified as a **close contact** and **does not have symptoms**, use the **Close Contact and Quarantine Trees**

## Symptom and Isolation Tree for Students and K-12 Workers

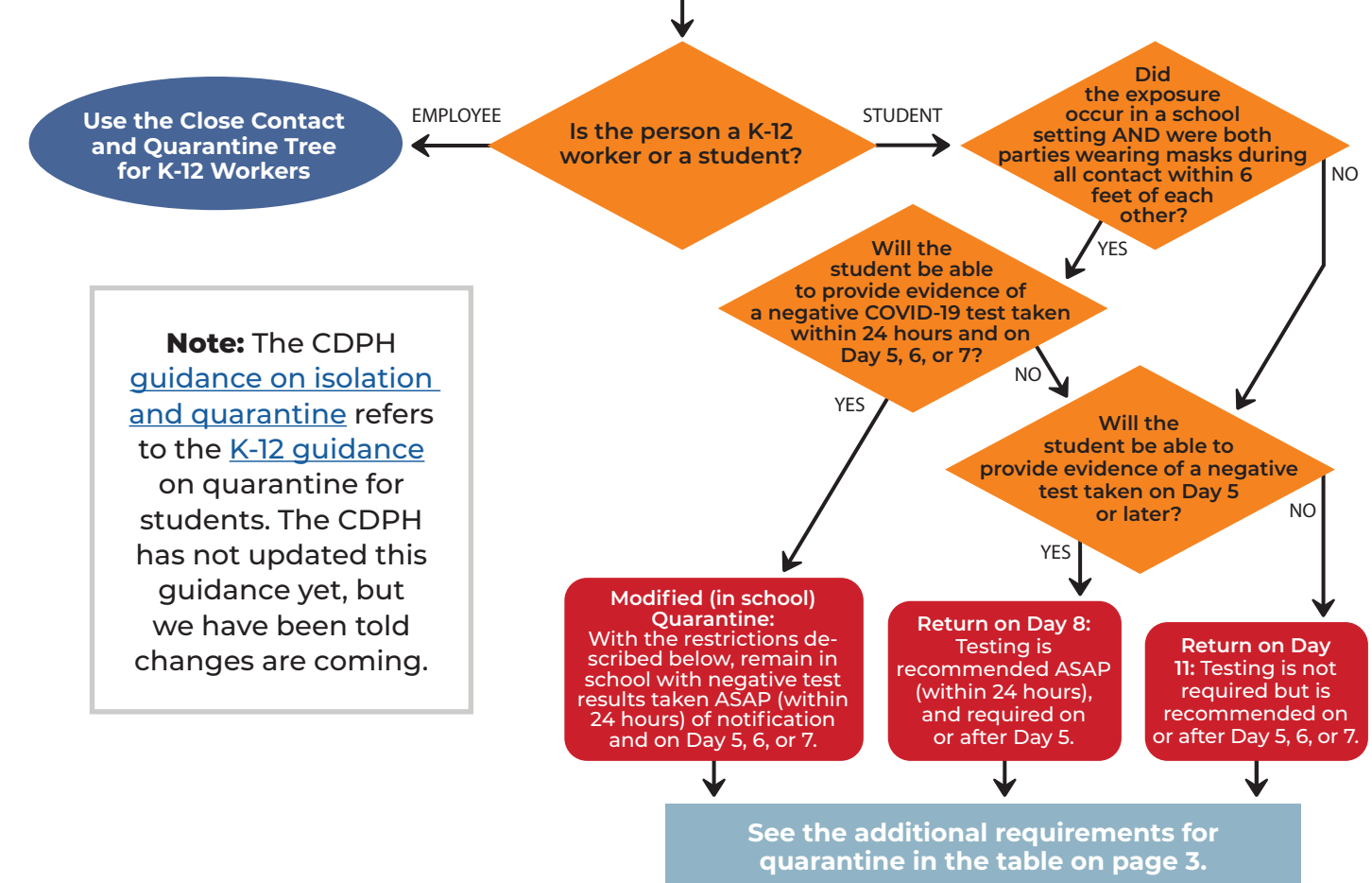


# Asymptomatic Positive Tree for Students and K-12 Workers



# Close Contact and Quarantine Tree for Students

A student who is not fully vaccinated or is not within 90 days of a lab-confirmed diagnosis of COVID-19, has been identified as having been in close contact with a person who is known to have COVID-19



## If the student cannot or will not follow the requirements listed above, quarantine for 10 days (return Day 11) is required.

### Quarantine Requirements

- **Modified (in-school) Quarantine:** This option may only be used by student close contacts exposed in a setting supervised by school staff, when the COVID-19-positive person and student close contact were both wearing masks during all contacts with each other within 6 feet. To remain in school the student must test within 24 hours of notification, and on day 5, 6, or 7. Rapid result (antigen) testing is recommended. The student may continue to participate in expanded learning or child care programs offered on the school campus, but must quarantine at home from all other before-school, after-school, and weekend activities. Activities may resume on or after Day 8 with evidence of a negative test sample collected on or after Day 5. (See FAQ answer No. 7).
- **Return on Day 8:** It is recommended that the student close contact test ASAP. Return as early as Day 8 is authorized with evidence that a diagnostic specimen collected on or after Day 5 is negative.
- **Return on Day 11:** Allows a student to return on Day 11. Testing is recommended on Day 5, 6, or 7, but not required.
- **If symptoms develop or a positive test result occurs** during quarantine, require isolation at home and consult the Symptom and Isolation or Asymptomatic Positive tree.

### Additional Requirements for Return Before Day 11

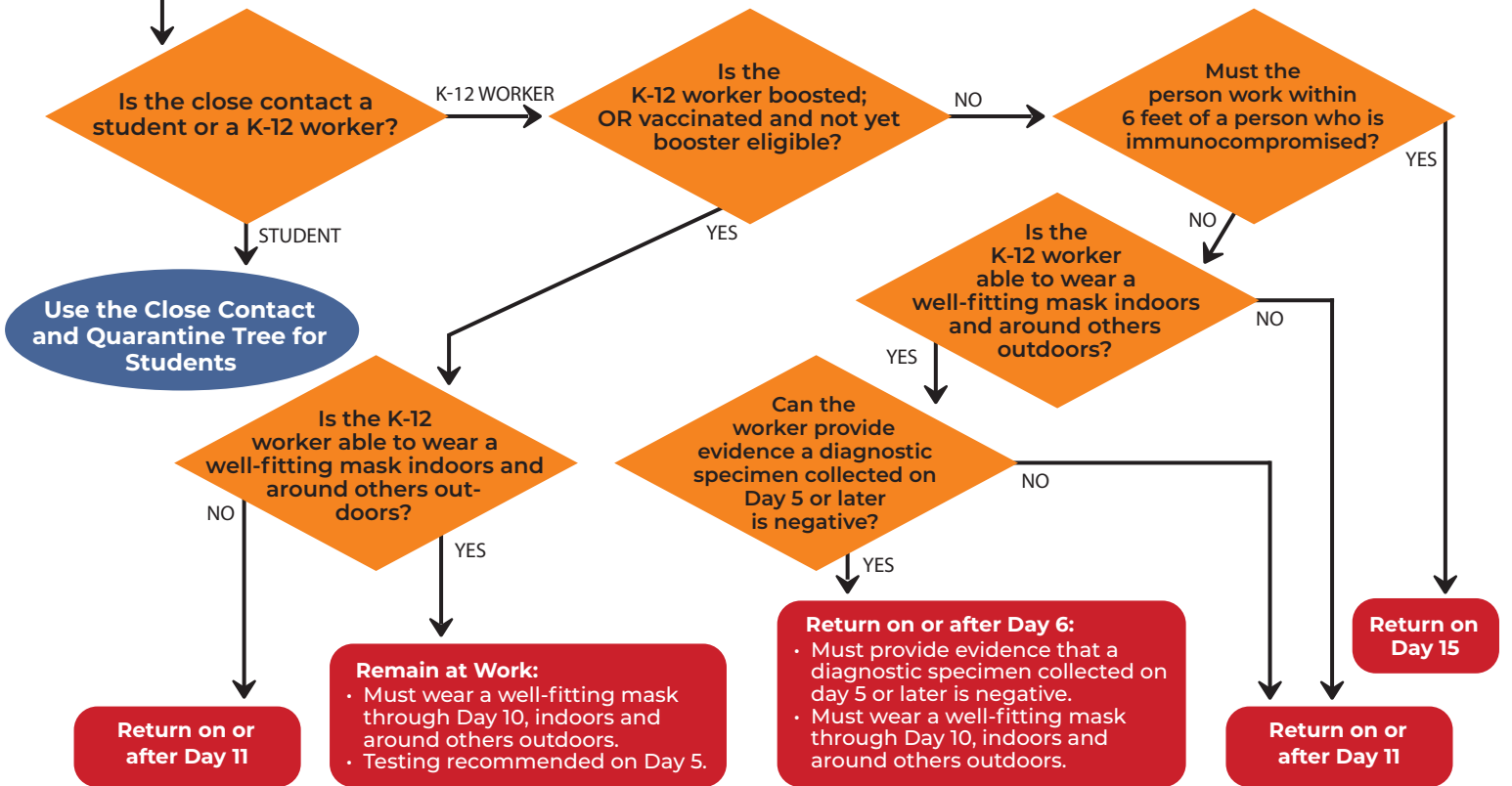
- Students must agree to self-monitor for symptoms, wear a face covering over their nose and mouth as required, use good hand hygiene practices, and use good cough and sneeze etiquette.
- Accommodations (like changes in the close contact's work, room, seat, or bus assignments) should be made to ensure that close contacts returning before Day 11 will not be near others who are immunocompromised (i.e, solid organ or bone marrow transplant, chemotherapy, similarly reduced ability to fight infections). If these accommodations cannot be made the close contact must quarantine for 10 days.

### Other Notes on Quarantine

- The number of days required for quarantine is counted from the day after the person's last close contact with a person who is contagious with COVID-19. Please see FAQ No. 1 under "isolation" for information on how long people are considered to be contagious.

# Close Contact and Quarantine Tree for K-12 Workers

**NOTE: Per revised CDPH guidance, “unvaccinated” includes persons who have been previously infected with SARS-CoV-2, including within the last 90 days, and those who are partially vaccinated.**



## Test Types By Situation

Situation	Appropriate Test Types
Return from quarantine before Day 11	<ul style="list-style-type: none"> <li>• Antigen</li> <li>• PCR or other NAAT</li> </ul>
Return from isolation before Day 11	<ul style="list-style-type: none"> <li>• Antigen is recommended because it is less likely to detect the virus beyond a person's contagious period.</li> <li>• PCR or other NAAT are acceptable.</li> </ul>
Modified quarantine	<ul style="list-style-type: none"> <li>• Antigen is recommended because it returns a result quickly.</li> <li>• PCR or other NAAT is acceptable.</li> </ul>
Person with symptoms	<ul style="list-style-type: none"> <li>• Antigen is acceptable, but if a person with symptoms receives a negative result from an antigen test, confirmation with a PCR or other NAAT is necessary to accept the negative result.</li> <li>• PCR or other NAAT</li> </ul>
Required screenings	<ul style="list-style-type: none"> <li>• Antigen is preferred because it returns a quick result, however, if a person without symptoms is antigen positive, the person should isolate while PCR (or other NAAT test) confirmation is obtained.</li> <li>• PCR or other NAAT</li> </ul>

